

AGENDA

Meeting: Devizes Area Board
Place: Devizes Extra Care Centre, Needham House, Victoria Road, Devizes
Date: Monday 17 July 2017
Time: 6.30 pm

The Area Board welcomes and invites contributions from members of the public. The chairman will try to ensure that everyone who wishes to speak will have the opportunity to do so.

If you have any requirements that would make your attendance at the meeting easier, please contact your Democratic Services Officer.

Refreshments and networking opportunity from 6:00pm .

Please direct any enquiries on this Agenda to Libby Johnstone (Senior Democratic Services Officer) , direct line 01225 718214 or email libby.johnstone@wiltshire.gov.uk

All the papers connected with this meeting are available on the Council's website at www.wiltshire.gov.uk

Press enquiries to Communications on direct lines (01225) 713114 / 713115.

Wiltshire Councillors

Cllr Anna Cuthbert, Bromham, Rowde and Potterne
Cllr Peter Evans, Devizes East
Cllr Sue Evans, Devizes North
Cllr Richard Gamble, The Lavingtons and Erlestoke
Cllr Simon Jacobs, Devizes and Roundway South (Chairman)
Cllr Laura Mayes, Roundway
Cllr Philip Whitehead, Urchfont and the Cannings (Vice Chairman)

RECORDING AND BROADCASTING NOTIFICATION

Wiltshire Council may record this meeting for live and/or subsequent broadcast on the Council's website at <http://www.wiltshire.public-i.tv>. At the start of the meeting, the Chairman will confirm if all or part of the meeting is being recorded. The images and sound recordings may also be used for training purposes within the Council.

By entering the meeting room you are consenting to being recorded and to the use of those images and recordings for broadcasting and/or training purposes.

The meeting may also be recorded by the press or members of the public.

Any person or organisation choosing to film, record or broadcast any meeting of the Council, its Cabinet or committees is responsible for any claims or other liability resulting from them so doing and by choosing to film, record or broadcast proceedings they accept that they are required to indemnify the Council, its members and officers in relation to any such claims or liabilities.

Details of the Council's Guidance on the Recording and Webcasting of Meetings is available on request.

Parking

To find car parks by area follow [this link](#). The three Wiltshire Council Hubs where most meetings will be held are as follows:

County Hall, Trowbridge
Bourne Hill, Salisbury
Monkton Park, Chippenham

County Hall and Monkton Park have some limited visitor parking. Please note for meetings at County Hall you will need to log your car's registration details upon your arrival in reception using the tablet provided. If you may be attending a meeting for more than 2 hours, please provide your registration details to the Democratic Services Officer, who will arrange for your stay to be extended.

Public Participation

Please see the agenda list on following pages for details of deadlines for submission of questions and statements for this meeting.

For extended details on meeting procedure, submission and scope of questions and other matters, please consult [Part 4 of the council's constitution](#).

The full constitution can be found at [this link](#).

For assistance on these and other matters please contact the officer named above for details

Tours of Needham House

Tours of Needham House, including the apartments and community areas, are available between 6pm and 6:30pm. Tours will depart from the lounge area by the main reception, everyone is welcome to join.

- | | | |
|---|--|---------------|
| 1 | Welcome

To welcome those present to the meeting. | 6:30pm |
| 2 | Apologies for Absence

To receive any apologies for absence. | |
| 3 | Minutes (<i>Pages 1 - 8</i>)

To approve and sign as a correct record the minutes of the meeting held on 5 June 2017. | |
| 4 | Declarations of Interest

To receive any declarations of disclosable interests or dispensations granted by the Standards Committee. | |
| 5 | Chairman's Announcements (<i>Pages 9 - 14</i>)

To receive the following announcements through the Chairman: <ul style="list-style-type: none">• Wiltshire Housing Site Allocations
For information a list of the proposed housing sites is provided to accompany this announcement. When the consultation starts, all the supporting evidence will be on the following webpage - http://www.wiltshire.gov.uk/wiltshsgsiteallocationsplan. This will include a topic paper for each community area specifically explaining how the proposals in the Plan have been developed. | 6:35pm |
| 6 | Needham House - Devizes Extra Care Centre Welcome

The meeting will be updated on the development of the newly opened Needham House.

Tours of the building will be available before the meeting from 6-6:30pm, everyone is welcome to join. | 6:40pm |
| 7 | Lavington School - Three Peaks Challenge

Students from Lavington School will present on and show photos from their recent 3 Peaks Challenge to scale Ben Nevis, Scafell Pike and Snowdon. | 6:50pm |

8	<p>Devizes Public Space Protection Order</p> <p>Officers to present a proposed Public Space Protection Order for the meeting's consideration.</p> <p>A PSPO for Devizes would be designed to prevent nuisance and/or anti-social behaviour by individuals or groups.</p>	7pm
9	<p>Dementia Action Alliance</p> <p>To hear an update from the Devizes Dementia Action Alliance.</p>	7:15pm
10	<p>Partner Updates (<i>Pages 15 - 24</i>)</p> <p>To receive updates from the following partners:</p> <ol style="list-style-type: none"> a. Wiltshire Police b. Fire and Rescue Service c. Health Services d. Devizes Community Area Partnership e. Schools updates f. Town and Parish Councils g. Devizes Community Area Wellbeing Group 	7:25pm
11	<p>Open Floor</p> <p>Residents are invited to ask questions of their local councillors.</p>	7:40pm
12	<p>Local Youth Network (<i>Pages 25 - 26</i>)</p> <p>To receive an update from the Local Youth Network and consider the following applications for youth grant funding:</p> <ul style="list-style-type: none"> • Alabare- £899.83 for a variety of activities for young people including sports and crafts. <p>Damian Haasjes , Wiltshire Wildlife Trust, will update the Area Board on a Forest School held during school holiday period.</p>	7:50pm
13	<p>Community Area Transport Group (CATG) (<i>Pages 27 - 54</i>)</p> <p>To consider the update and any recommendations arising from the Community Area Transport Group (CATG) meeting held on 14 June 2017.</p>	8pm
14	<p>Air Quality</p> <p>To receive any updates from the Devizes Air Quality and Transport Strategy Group.</p>	8:10pm

15	<p>Area Board Funding (<i>Pages 55 - 60</i>)</p> <p>To consider applications for Community Area Grant funding:</p> <ul style="list-style-type: none"> • The Lions Club of Devizes - £1,000 towards a public access defibrillator; • Wharf Theatre- £5,000 towards a renovation project. <p>To consider a Councillor-led initiative from Cllr Richard Gamble:</p> <ul style="list-style-type: none"> • DOCA project works- £6,000 	8:15pm
16	<p>Urgent items</p> <p>Any other items of business which the Chairman agrees to consider as a matter of urgency.</p>	8:30pm
17	<p>Close</p> <p>The next ordinary meeting of the Area Board will be held on 18 September 2017.</p>	8:30pm

MINUTES

Meeting: DEVIZES AREA BOARD
Place: Devizes Sports Club, London Road, Devizes SN10 2DL
Date: 5 June 2017
Start Time: 6.30 pm
Finish Time: 8.11 pm

Please direct any enquiries on these minutes to:

Becky Holloway (Democratic Services Officer) Tel: 01225 718063 or (e-mail) becky.holloway@wiltshire.gov.uk

Papers available on the Council's website at www.wiltshire.gov.uk

In Attendance:

Wiltshire Councillors

Cllr Anna Cuthbert, Cllr Peter Evans, Cllr Sue Evans, Cllr Richard Gamble, Cllr Simon Jacobs (Chairman), Cllr Laura Mayes and Cllr Philip Whitehead (Vice Chairman)

Wiltshire Council Officers

Graeme Morrison, Community Engagement Manager
Becky Holloway, Democratic Services Officer

Town and Parish Councillors

Erlestoke Parish Council – Stan Jonik
Rowde Parish Council – Ben Bentley
Devizes Town Council – Judy Rose, Ellen Wooldridge, Nigel Carter
Urchfont Parish Council – Dave Mottram, Graham Day
Bromham Parish Council – Jean Collens, Robert Cavill
Potterne Parish Council – Tony Molland

Partners

Wiltshire Police – Insp Nick Mawson
Dorset and Wiltshire Fire and Rescue Service – Jack Nicholson
Older Person's Champion - Mike Challinor.
Devizes Community Area Partnership – Kate Freeman
Devizes School – Sue Marshall
Lavington School – Sarah Lowkis

Total in attendance: 28

<u>Agenda Item No.</u>	<u>Summary of Issues Discussed and Decision</u>
1	<p><u>Welcome</u></p> <p>The Chairman welcomed everyone to the first Area Board of the new council and asked members to introduce themselves. Nigel Carter was also welcomed as the newly elected mayor of Devizes.</p>
2	<p><u>Apologies for Absence</u></p> <p>There were no apologies for absence.</p>
3	<p><u>Minutes</u></p> <p>It was moved that the minutes of the meetings held on 7 March 2017, 5 April 2017 and 16 May 2017, be approved and signed as a correct record</p> <p>Resolved: To approve and sign as a correct record the minutes of the meetings of Devizes Area Board on 7 March, 5 April, and 16 May 2017</p>
4	<p><u>Declarations of Interest</u></p> <p>The Chairman declared a non-pecuniary interest in item 11.a due to personal involvement in the organisation, and explained that for this item, Cllr Philip Whitehead would take the chair.</p>
5	<p><u>Chairman's Announcements</u></p> <p>The Chairman made the following announcements:</p> <p><u>Bobby Van Trust – Online Safety Advisers</u></p> <p>The chairman drew to the meeting's attention the written information sheet provided in the agenda pack and explained that people aged over 60 or over 18 and disabled, could request a home visit to help them protect themselves from cybercrime, and to improve their online safety.</p> <p><u>Devizes Eisteddford Grant Application</u></p> <p>Cllr Whitehead was in the chair.</p> <p>It was explained that this item would be taken earlier in the agenda to allow the applicant to honour a prior engagement. The chair introduced the item and invited Michael Johnson, the applicant, to speak to his application. It was explained that Devizes Eisteddford was a three-day competitive arts festival and that the grant would be used towards buying a piano for one of the venues but that it would remain in situ all year and not for the festival only. After a short debate it was</p>

	<p>Resolved: To award £1000 to Devizes Eisteddford towards the cost of purchasing an upright piano.</p>
6	<p><u>Area Board 2017</u></p> <p>Cllr Simon Jacobs returned to the chair.</p> <p>Cllr Philip Whitehead delivered a presentation on the position of the new council. He reported on the results of the local elections and the councillors who had taken up cabinet positions, and reported that the size of the cabinet had reduced by one with an increase made to the number of portfolio holders to compensate. Cllr Whitehead explained that the council's annual budget was £900million and that future budgets would be likely to become more dependent on locally raised funds with a reduction in national government funding.</p> <p>Graeme Morrison, Community Engagement Manager (CEM), delivered a presentation on his role, current projects and priorities for the Devizes community area, and the funding available for community projects in 2017-18. The CEM explained that his role was to maximise community engagement with council services; to assist the Area Board with delivering local priorities; and to support the grant application process. In practical terms this involved supporting the working groups of the Area Board, facilitating and co-ordinating community events, and connecting the public with events and services through managing the community matters online blog and a weekly newsletter which those in attendance were encouraged to sign up to.</p> <p>The CEM explained that the role of the Area Board was to host events, invest in community projects, agree local priorities, support and deliver youth projects, support volunteering, and act as a consultee on changes to local policy and service delivery. He went on to provide headline figures for community engagement since the board had been in operation, and the grant funding available for the municipal year 2017/18.</p> <p><u>Community Hub and Library</u></p> <p>Wiltshire Council's offices on Snuff Street had now closed, with services transferred to the newly renovated Community hub and library on 30 May 2017. Meeting space would be available in the new hub for community use. Members of the meeting were asked to vote for a logo for the new hub, and having added the result of this vote to the online vote, it was</p> <p>Resolved:</p> <p>To adopt logo one (depicting a canal lock), as presented on the attached slide, as the logo for the Devizes Community Hub and Library.</p>

7	<p><u>Appointments to Outside Bodies and Working Groups</u></p> <p>It was proposed that the Area Board reconstituted the working groups of the Area Board and appointed working group representatives and members to outside bodies as detailed in the report.</p> <p>The membership of CATG was amended to reflect the dissolution of Cycle Devizes and that Pat Straw had stepped down as a member, and it was</p> <p>Resolved:</p> <p>To reconstitute the working groups of Devizes Area Board with the membership as laid out in the report with the amendments above.</p> <p>To appoint Area Board representatives to outside bodies as detailed in the report.</p>
8	<p><u>Open Floor Session</u></p> <p>The chairman invited questions from the floor and the following issues were raised:</p> <p>The next CATG meeting would take place on 14 June 2017.</p> <p>The highways issues relating to Caen Hill, Devizes would be subject to a review in summer 2017 and this would be published and accessible to the public.</p>
9	<p><u>Commemorative Tree Planting</u></p> <p>Graeme Morrison delivered a presentation on a county wide initiative, supported by the Woodland Trust, to plant 10,000 trees in Wiltshire to commemorate the centenary of the end of World War One. The suggested options included planting a commemorative wood in one location within Wiltshire, or to distribute the trees amongst the 18 community areas.</p> <p>In the discussion that followed the following points were raised and clarified: that the British Legion had been involved in the project's development; that measures for the care and protection of the trees was under discussion; that it would be helpful to link with the neighbourhood plan for Devizes which included the mapping of public green spaces; that consideration should be made for linking the trees with existing war memorials; and that it would be poignant to name each tree for a specific soldier. After discussion, it was felt that the trees should be split up and allocated to the 18 community areas, but that more discussion was needed to decide on their location within the Devizes area.</p> <p>It was agreed that should feedback from the other Area Boards be similar, a local working group for the Devizes Area would be set up for all the parishes to join and contribute to. The CEM agreed to provide an update at the Area Board meeting on 17 July 2017.</p>

Partner Updates

The chairman drew the meeting's attention to the written updates in the agenda pack and invited partners to speak to their reports.

Community Policing Team

Insp Nick Mawson presented the written report and highlighted that the format of the report had changed to include a message from the chief constable and a local update. The inspector referenced recent national events and asked that members of the public stayed vigilant to suspicious activity but that there had been no specific intelligence received regarding the area and that it was important to be alert but not alarmed. Members thanked the inspector for his update and for the increased presence and reassurances of the police over the previous weeks.

Fire and Rescue Service

Jack Nicholson presented the written report and highlighted that there were new opportunities for volunteering in the fire service, especially with the Safe and Well team responsible for supporting vulnerable people to protect their homes against the risk of fire.

Devizes Community Area Partnership

Judy Rose presented the written report and highlighted the following points: that the group would have a rotating chair and that it was currently financially secure. Issues currently being worked on included health and wellbeing, the development of the neighbourhood plan, the new urgent care centre, and the cancellation of bus routes, in particularly the x33 between Devizes and Chippenham,

Schools updates

Sue Marshall, from Devizes school, reported that students were currently busy with exams and that one year 13 pupil had received an offer of a place at RADA. The year 13 prom had taken place with the year 11 prom arranged for later in the summer and a staff social event had also been a success. The school would soon have a new logo to represent the values of the school and its place within the Devizes community. Several primary school visits had taken place and the year 7 students were participating in the council's Big Pledge activity challenge. Members were encouraged to attend a school open day on 12 July.

Sarah Lowkis, from Lavington School, reported that 31 students had completed the three peaks challenge and had broken two world records by being the youngest and fastest school group to complete the challenge. The school was preparing for a Rainbow Course to be held on 12 July on the school site for young people with disabilities. The Multi-Academy Trust (MAT) responsible for the school was in the process of changing its name to reflect wider expansion within the South West. The Chairman offered the board's congratulations for the achievement of the team who had completed the three peaks challenge and invited students from the team to present at a future Area Board meeting.

11

Area Board Funding

The Area Board considered three applications to the Community Area Grants Scheme, in addition to the application considered earlier in the meeting. Applicants were present to answer questions.

On consideration of the application from Bromham Busy Bees Kids Nursery for new flooring and improvements to the play area space, members discussed the importance of village nurseries and that the project would enable Busy Bees to make better use of the space they had available. It was clarified that the building was owned by the applicant organisation. Concerns were raised in relation to funding the whole project without further information and it was suggested that funding could be granted for the 50% of the cost of the floor with the applicant being invited to return at a later meeting with an application for the remainder of the project.

On consideration of an application from St John's Parish Room Committee, the multiple and secular community uses of the rooms were discussed and it was noted that many of these groups were in receipt of free or heavily discounted use.

The third application for consideration was from Strange Old Things, a mobile museum. In response to questions, it was clarified that the museum was designed to be interactive and accessible to groups unable to visit traditional museum. Examples of sessions given included retirement homes, homelessness hostels, and mental health institutions. The grant would be used to expand the range of artefacts. Accreditation had been applied for but had not yet been obtained and members were keen for this to happen prior to funding being awarded.

Members were asked to ratify the grant of £300 awarded between Area Board meetings to support a Dementia-friendly cinema screening, and this was agreed.

It was

Resolved:

To award £3888.00 to Bromham Busy Bees Kids Nursery for replacement flooring

To award £2500.00 to St John's Parish Room Committee towards refurbishment costs.

To award £1000.00 to Strange Old Things for additional sessions from The Mobile Museum, subject to obtaining accreditation from the British Arts Council.

To ratify £300 funding awarded between meetings of the Area Board by the

	Community Engagement Manager to support a Dementia friendly cinema screening.
12	<p><u>Urgent items</u></p> <p>There were no urgent items.</p> <p>The CEM confirmed, in answer to a question, that funding for a pilot cycling scheme in the Devizes Area may be available and that the interested body should get in touch with him to discuss this further.</p>
13	<p><u>Close</u></p> <p>The Chairman thanked everyone for coming and reminded members that the next meeting of the Area Board would take place on 17 July 2017 at the Extra-Care Centre on Victoria Road.</p>

This page is intentionally left blank

Agenda Item 5

Chairman's Announcements

Subject:	Formal Consultation on the Draft Wiltshire Housing Site Allocations Plan
Contact Details:	Sophie Davies 01225 713429
	<p>Draft Wiltshire Housing Site Allocations Plan –Notice of consultation</p> <p>Wiltshire Council's Cabinet, on 20 June, approved the draft Wiltshire Housing Site Allocations Plan for consultation to commence in July.</p> <p>The draft Wiltshire Housing Site Allocations Plan, a formal Development Plan Document, has been prepared in accordance with the Wiltshire Core Strategy. It will allocate new sites for housing and amend, where necessary, settlement boundaries at the Principal Settlements of Salisbury and Trowbridge, Market Towns, Local Service Centres and Large Villages.</p> <p>Although the consultation will not start until Friday 14 July 2017 (and continue for 10 weeks) the Council are seeking to raise awareness through the Area Board network of the consultation period and drop in events being held as part of the consultation.</p> <p>The drop-in events will be open between 12 noon and 7pm as follows:</p> <p>Neeld Community & Art Centre, High Street, Chippenham SN15 3ER -Monday 17 July 2017</p> <p>Guildhall, Market Place, Salisbury SP1 1JH - Wednesday 19 July 2017</p> <p>Town Hall, St Johns Street, Devizes SN10 1BN - Monday 24 July 2017</p> <p>Atrium, County Hall, Trowbridge BA14 8JN - Wednesday 26 July 2017</p> <p>Officers from the Council will be available during the day to answer questions about the draft Plan and we would encourage people to attend to find out more about what the draft Plan proposes in their area.</p> <p>From the start of consultation on Friday 14 July, the draft Plan and the supporting evidence will be available during normal opening hours at the Council's main offices (Monkton Park, Chippenham; Bourne Hill, Salisbury; and County Hall, Trowbridge) and in all Wiltshire Council libraries. It will also be available on the Council's web site via this link:</p> <p>http://www.wiltshire.gov.uk/wiltshsgsiteallocationsplan</p> <p>Information about how to comment on the draft Plan will be circulated via the area board networks closer to this time.</p>

Summary of proposed allocations in the draft Wiltshire Housing Site Allocations Plan

East Wiltshire Housing Market Area

Relationship to Community Area (CA)	Parish Area	Allocation Reference	Site Name	Approximate dwellings	SHLAA reference
Tidworth CA	Ludgershall	H1.1	Empress Way	270 ^[1]	553
Devizes CA	Market Lavington	H1.2	Underhill Nursery	50	2055/530
Devizes CA	Market Lavington	H1.3	Southcliffe	15	1089
Devizes CA	Market Lavington	H1.4	East of Lavington School	15	3443

^[1] This total includes 109 dwellings that already have planning permission

North and West Wiltshire Housing Market Area

Relationship to Community Area (CA)	Parish Area	Allocation Reference	Site Name	Approximate dwellings	SHLAA reference
Trowbridge CA	North Bradley / Trowbridge	H2.1	Elm Grove Farm	200	613
Trowbridge CA	North Bradley	H2.2	Land off the A363 at White Horse Business Park	150	298
Trowbridge CA	Hilperton / Trowbridge	H2.3	Elizabeth Way	205	297/263
Trowbridge CA	Trowbridge	H2.4	Church Lane	45	1021
Trowbridge CA	Trowbridge	H2.5	Upper Studley	20	3260
Trowbridge CA	Southwick	H2.6	Southwick Court	180	3565
Warminster CA	Warminster	H2.7	East of the Dene	100	603
Warminster CA	Warminster	H2.8	Bore Hill Farm	70	302/1032
Warminster CA	Warminster	H2.9	Boreham Road	30	304
Warminster CA	Chapmanslade	H2.10	Barthers Farm Nurseries	35	316
Chippenham CA	Hullavington	H2.11	The Street	50	690
Chippenham CA	Yatton Keynell	H2.12	East of Farrells Field	30	482
Malmesbury CA	Crudwell	H2.13	Ridgeway Farm	50 ^[2]	3233
Westbury CA	Bratton	H2.14	Court Orchard / Cassways	40	321

South Wiltshire Housing Market Area

Relationship to Community Area (CA)	Parish Area	Allocation Reference	Site Name	Approximate dwellings	SHLAA reference
Salisbury / Wilton CA	Netherhampton	H3.1	Netherhampton Road	640	S1028
Salisbury CA	Salisbury	H3.2	Land at Hilltop Way	10	S61
Salisbury / Wilton CA	Netherhampton	H3.3	North of Netherhampton Road	100	S1027
Salisbury CA	Salisbury	H3.4	Land at Rowbarrow	100	3272
Amesbury CA	Durrington	H3.5	Clover Lane	45 ^[3]	3154/S98
Amesbury CA	Durrington	H3.6	Land off Larkhill Road	15	3179

^[2] This total includes 10 dwellings that already have planning permission

^[3] This total includes approximately 15 dwellings that already have planning permission

Devizes Area Board Report

July 2017

1. East Community Policing Team

Sector Head:
Inspector Nick Mawson



Sector Deputy:
Sergeant Mark Andrews



Community Coordinator:
PC Teresa Herbert

Devizes PCSO's

PCSO Paula Yarranton,



PCSO Fiona Marno



PCSO Melissa Camilleri,



PCSO Sue Ellway



PCSO Kelly Watts,



PCSO Sam Burnside





Hello and welcome to this Community Policing Team report.

We have just completed a busy period of attendance to Parish annual meetings in recent weeks, in our efforts to reach as many of the fifty plus Parish and Town councils we work in partnership with. This has allowed for feedback in relation to policing priorities, areas of concern and relevant tasking of officers for local engagement, in addition to our daily policing and tasking commitments.

Our monthly report, established at the commencement of the CPT model, sent to each of our Parish councils has assisted with this process of information sharing. Please do advise our community co-ordinator if you have any further feedback regarding this.

Update from Helen Kennedy, Head of Media Services, Wiltshire Police

Many areas boards are raising the issue that our 101 Call handling for Wiltshire remains below the standards we wish to deliver.

To give context to the current position it is important to understand that there has been a significant shift in the way we manage our demand within the Police Service.

The Community Policing Model recognises that the Police service is being asked to do 'more with less' and helps to address this fact by assessing the demand at the first point of contact. The call handler will assess the threat, harm and risk without necessarily tasking an officer to attend in the first instance. The adage they work to in our Communication Centre is to get it right first time.

As a result of this change in handling we have seen an increase in waiting times for calls to be answered.

However, since we initiated the CPT Model, calls for immediate help have seen an improvement.

It is also important to note that we have engaged in a significant recruitment phase for many roles within the CPT. Police Officers, PCSO, Local Crime Investigators and Prisoner Transport Team members have all been recruited. Where do we find people with the right skills to do these roles? One area is our Communication Centre. These are members of Police Staff who have been trained in aspects of law and have good communication skills. It is not surprising that they then wish to use their training and continue to develop. Consequently recruitment and retention of staff is a challenge, however to reassure you our Communication Centre Leadership team have a well-established rolling recruitment programme in place.

We continue to review and assess where improvements are needed. We are currently exploring solutions including on-line reporting of crime, a more informative website and on-line chat and hope this different access channels will start to be available late summer 2017. We will not solve this issue overnight and are working hard any problems to deliver the best possible service to those who contact us.

Thank you for your continued support to Wiltshire Police.

Please follow us on:

Twitter <https://twitter.com/wiltshirepolice>

Facebook <https://www.facebook.com/wiltshirepolice/>

Or sign up to Community Messaging <https://www.wiltsmessaging.co.uk/> our free Community Messaging service will also help keep you updated about policing and crime in your local area.

2. CPT - Current Priorities & Consultation Opportunities:

Current Priorities Devizes and surrounding areas.

ASB Prevention

Following on from the previous Anti-Social Behaviour in the Town Centre, for which in excess of 250 patrols were recorded of the key areas, there is now a new ASB prevention priority in place covering not only the town centre but a slightly wider area, including Hillworth Park, The Green, The Crammer, Green Lane and the Skate park.

It is recognized that the core of the problem is the homeless population of Devizes many of whom are alcohol and/or drug dependant. As well as generalized anti-social behaviour by this core group, there are also issues of street drinking and begging. In addition to this core of homeless people there have also been reported issues of youth anti-social behaviour which is also forming part of this priority.

There has been ongoing multi-agency work on this priority with some progress made including the issue of a Community Protection Warning Notice (CPWN) to one individual in regards to begging. Two youths recently also received Acceptable Behaviour contracts via referral to Anti-Social Behaviour risk assessment conference (ASBRAC).

Those involved in working on this priority include Devizes Town Council, Town CCTV, Wiltshire Council, the local community and shopkeepers. At this stage the collation of evidence is a key aim as at present there is a Designated Public Place Order (DPPO) which is valid until October 2017 but if this is to be replaced with a Public Spaces Protection Order (PSPO) then evidence will be required to support an application for a PSPO.

We are aware that anti-social behaviour often increases as the weather improves and as such this priority will remain open until we are satisfied with the outcome. To date the new priority has recorded 41 patrols since its implementation three weeks ago.

Dwelling and non-dwelling burglaries.

Targeted patrols continue throughout the area in relation to this policing priority. A total of nine burglaries have occurred within the past two months throughout the Devizes, Marlborough and Pewsey area.

These include two dwelling burglaries; both in Devizes on 6th and 21st of June 2017. Three business premises were broken into and items stolen, one in Devizes, the other in Pewsey and the other burglaries consisted of items being taken from garages or sheds. Enquiries are continuing for both the dwelling burglaries and a suspect has been charged for one of the business burglaries.

Wiltshire Police will continue to limit the number of offences by pro-active policing, intelligence gathering and conducting policing operations in these areas.



Theft from motor vehicles

Over 300 targeted patrols have been completed in relation to this priority. Nine thefts from motor vehicle offences have occurred within the past month across the Devizes, Pewsey & Marlborough area with locations including Everleigh Road & Roundway Hill White Horse.

Several of the beauty spot locations recently targeted currently have no Police warning signage - having been forcibly removed, which includes our posters. Thank you for funding further metal Police warning notice signage for fitting at such locations, these will alert our visitors of the need to be vigilant and not to leave any valuables within parked and unattended vehicles.

Two males have recently been charged with conspiracy to steal from vehicles, which covers a very large number of offences committed within the CPT area. This case is subjudice but I hope to report on this in future Area Boards.

Update re Rural Crime Partnership

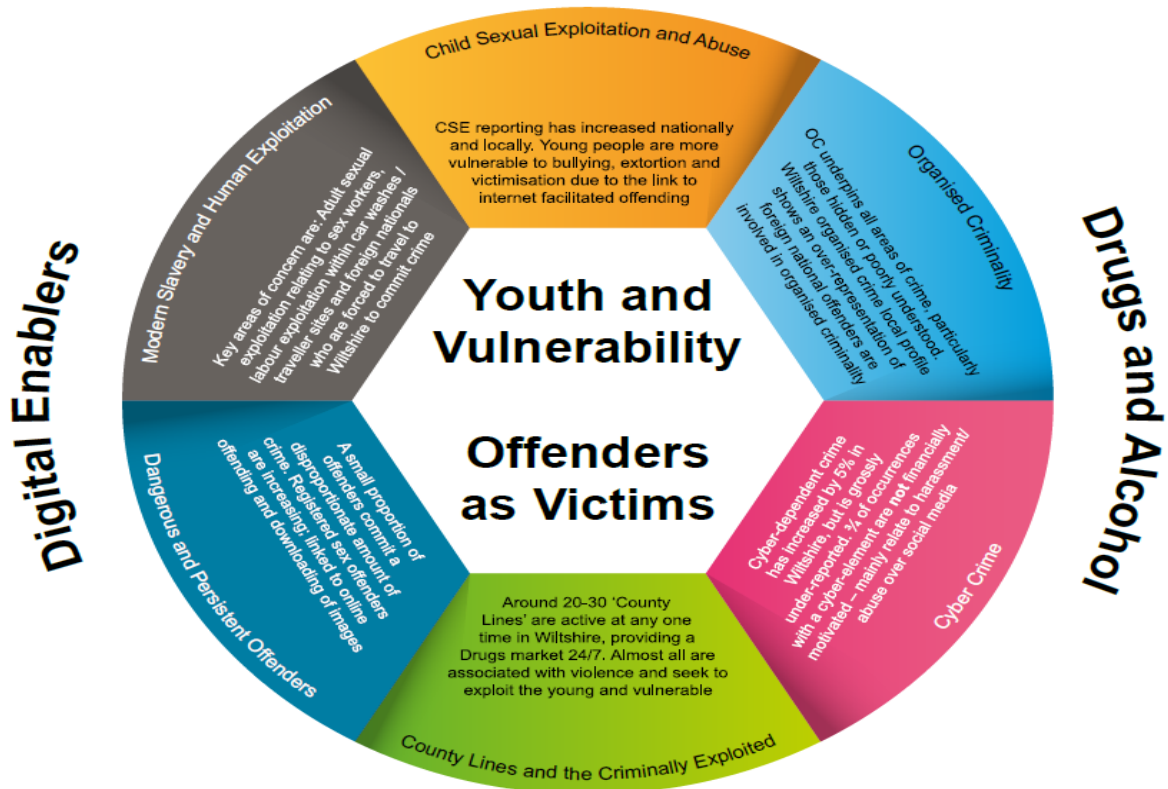
Recent meetings have been held with local farmers in east Wiltshire and the WCC Rights of Way Officer in relation to discussions concerning the use of byways for illegal purposes which is most impactful upon our east Wiltshire community. We are working together with our partners to consider relevant legislation and powers available for our use to robustly manage those offenders and offences identified.

Activity around hare coursing is a focus of concern and our rural crime team are planning forthcoming policing operations.

Operation ASTEN has involved dealing with illegal off roaders on Salisbury plain. These policing operations have continued in recent weeks with engagement and relevant disposal of offences identified.

3. Wiltshire Police Control strategy

Over the page is our Control Strategy for your reference. This focuses on how we conduct our operational policing based on the Police and Crime Plan. We will continue to align our resources with the threat/harm/risks presented in line with the control strategy. Our priority will always be matters that fall within the control strategy however it is right to say that these issues do not take up all of our available resource and there remains sufficient capacity to deal effectively with the majority of community issues raised.



4. Events

Devizes Muslim Community are holding Eid Celebrations at Devizes Sports Club, London Road on Sunday the 9th of July between the hours of 12:00 - 17:00. The event will be attended by Devizes MP Claire Perry and the Mayor of Devizes, who will both be providing speeches. The event will include a Celebration lunch, Fund raising, Children's activities and Henna art, with monies raised going to The Devizes Foodbank.

Event planning

A toolkit is available from Wiltshire Council which gives fantastic guidance and advice for organising most types of events including topics ranging from traffic management to toilets and provides contact details for which agencies and departments need to be contacted when applying for various licences or road closures. It can be found at <http://www.wiltshire.gov.uk/public-events-toolkit.pdf> In essence all organisers must be responsible for identifying any risks and putting in measures to remove or reduce them.

Nick Mawson
Sector Inspector,
Wiltshire East CPT



Young people urged to speak out about health and care in Wiltshire

A young carer from Trowbridge, who has carried out more than 200 hours of volunteering, is urging his peers to get involved in a new scheme. 19-year-old Scott Kane, from Hilperton, has helped to look after his mum, who has cerebral palsy, since the age of three and has found volunteering has boosted his confidence.



Scott is now helping to promote **YouthWatch** - a new scheme launched by Healthwatch Wiltshire, which aims to help young people have a voice on the way health and care services are run in the county.

The Lackham College student was part of a group of ten 'Young Listeners' from Healthwatch Wiltshire and Community First who spoke to hundreds of their peers about their views and experiences with health and social care over the last year. Their findings went into a report which was shared with health officials who are making changes to the way services are run.

Scott said: "As young people we often feel that we don't have any authority when talking to a doctor, but through YouthWatch we can help give other children and young people that power."

YouthWatch will train young volunteers (aged from 14-25) to listen to the views of children and young people in the county to find out what they think about health and care services. They will then feed this information back to decision-making boards to shape health services in Wiltshire.

Volunteering has helped Scott develop new skills and boosted his confidence. He explained: "When I got to my teenage years I decided to get involved in volunteering to meet new people and help others. Due to looking after my mum from a young age it has made me more caring, more understanding and I'm able to value life for what it is. I've done over 200 hours of volunteering now and this makes me happy.

"I thrive on helping others and volunteering has helped to give not only me a voice but others too. Young people often don't get heard because of their age but through YouthWatch we can make a real impact on the way services are run locally. I would highly recommend others get involved and join YouthWatch, not only for their own benefit but to give something back to the wider community and have a real impact on the way services are run."

Contact us:

Tel 01225 434218

info@healthwatchwiltshire.co.uk

healthwatchwiltshire.co.uk

YouthWatch
Speak out!
Wiltshire

Young people shaping health & care

If you, your child, or someone you support or look after would be interested in joining the YouthWatch scheme, get in touch or visit healthwatchwiltshire.co.uk/youthwatch for more details.

Healthwatch Wiltshire is a local independent organisation which exists to speak up for people on health and care. If you have used a service recently then we would like to hear from you. We use what people tell us when we meet with the commissioners and providers of services to make sure that they take account of your views and experiences.

July 2017

Overview

NHS Wiltshire Clinical Commissioning Group (CCG) is responsible for commissioning a broad range of healthcare for the population of Wiltshire. We are led by experienced local GPs drawn from across the county, who provide clear clinical leadership to the big decisions affecting the future of healthcare provision in Wiltshire, carefully tailored to meet the differing needs of people locally.

Our vision is to ensure the provision of a health service which is high quality, effective, clinically-led and local. We are committed to delivering healthcare that meets the needs of Wiltshire people, to consult and engage with our population to enable them to be involved in decisions made about health services and to deliver those services to people in their own homes or as close to home as possible.

The right healthcare, for you, with you, near you

New Interim Chief Officer joins Wiltshire Clinical Commissioning Group

Linda Prosser has joined Wiltshire Clinical Commissioning Group (CCG) as Interim Chief Officer.

Chair of Wiltshire CCG, Dr Peter Jenkins said: "We look forward to working with Linda and are confident she is well-placed to lead us through the challenges we know are ahead of us".



Ms Prosser, who joins the CCG from NHS England South West where she was Director of Assurance and Delivery, said:

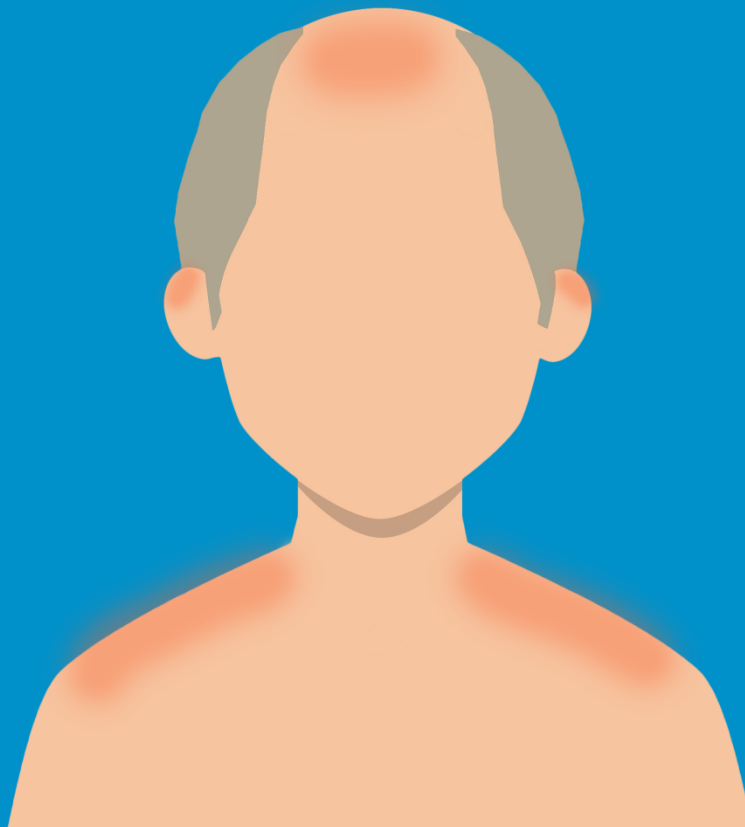
"I'm delighted to join Wiltshire Clinical Commissioning Group. This is a very strong CCG with a good track record that is well placed to rise to the challenges facing the health and care system in the next few years. I am very pleased to be a part of that. We will be working very closely with our colleagues in Wiltshire Council to this end, including the appointment of a shared leadership role across the CCG and Adult Social care. I intend to provide the leadership and support to the CCG during this period up until this new post is taken up. Meanwhile we will continue to put local people at the heart of what we do to commission healthcare services that get the best possible outcomes for them."

Ms Prosser replaces Tracey Cox, who took on the interim role in October 2016 alongside her Accountable Officer duties for Bath and North East Somerset CCG, and has now returned to that role.

Getting painful sunburn just once every two years, can triple your risk of melanoma skin cancer.

Don't risk it. Cover up mate.

#CoverUpMate



Report to Devizes Area Board
Date of meeting 17th July 2017
Title of report Youth Grant Funding

Purpose of the Report:

To consider the applications for funding and procurement listed below together with the recommendations of the Local Youth Network (LYN) Management Group.

Grant Applications

Applicant	Amount requested	LYN Management Group recommendation
Alabare	£899.83	Recommended

1. Background

The recommendation from the LYN Management Group has been made in accordance with the following guidelines:

- Leaders guidance for Community Area Boards on Positive Activities for Young People
- Positive Activities for Young People local Youth Network Terms of Reference
- Positive Activities Toolkit for Community Area Boards
- Procurement Policies and Guidelines <http://thewire.wiltshire.council/index/service-areas-carolyn-godfrey/business-services-procurement/procurement-policies-and-guidance.htm>

Young people have considered this application and identified it as a priority for Area Board funding.

2. Main Considerations

- 2.1. Councillors will need to be satisfied that Youth Grant Funding awarded in the 2015/2016 year are made to projects that can realistically proceed within a year of it being awarded.
- 2.2. Councillors will need to decide and be assured that young people and the community will benefit from the funding being awarded and the project/positive activity proceeding. The application should meet the identified needs, priorities and outcomes for young people in the areas, as identified in the LYN Needs Assessment and Strategic Plan.
- 2.3. Councillors will need to ensure measures have been taken in relation to safeguarding children and young people.
- 2.4. Councillors will need to ensure that young people have been central to each stage of this Youth Grant Funding application.
- 2.5. Councillors will need to be satisfied that procurement policies and guidelines have been adhered to.

3. Environmental & Community Implications

Youth Grant Funding will contribute to the continuance and/or improvement of cultural, social and community activity and wellbeing in the community area, the extent of which will be dependent upon the individual project.

4. Financial Implications

Financial provision had been made to cover this expenditure.

5. Legal Implications

There are no specific legal implications related to this report.

6. Human Resources Implications

There are no specific human resources implications related to this report.

7. Equality and Inclusion Implications

Ensuring that Community Area Boards and LYNs fully consider the equality impacts of their decisions in designing local positive activities for young people is essential to meeting the Council’s Public Sector Equality Duty.

8. Safeguarding Implications

8.1 The Area Board has ensured that the necessary policies and procedures are in place to safeguard children and young people. The Community Youth Officer has assessed this application agreed it meets safeguarding requirements.

8.2 Wiltshire Council has ensured that the necessary policies and procedures are in place; through its’ procurement process, to safeguard children and young people. However, the Area Board needs to be satisfied that the providers being procured have everything necessary in place. The Community Youth Officer has assessed this and agreed providers meet safeguarding requirements.

9. Applications for consideration

Application ID	Applicant	Project Proposal	Requested
	Alabare	Young People Activities Project	£899.83
<p>Project description This project involves a range of activities and experiences for the young people within the Alabare services ranging from crafting to mountain climbing. This will benefit them in a number of ways, such as developing their self esteem and increasing their confidence to finding work or investigating work experience or training. Alabare have 7 houses for homeless and vulnerable young people over three community areas. This grant represents 1/3 of the total project cost. Trowbridge and Calne community areas are also being approached for 1/3 of the costs. The project aims include making the project sustainable by selling crafts in order to buy more materials.</p>			
<p>Recommendation of the Local Youth Network Management Group Recommended</p>			

Report Author

Helen Bradley, Locality Youth Facilitator
Tel: 07919396465 Email: helen.bradley@wiltshire.gov.uk

AGENDA

Meeting: Devizes Community Area Transport Group (CATG)
Place: Kennet House, Sergeant Rogers Way, Hopton Ind Estate, Devizes
Date: Wednesday 14 June 2017
Time: 10.00 am

Please direct any enquiries on this Agenda to Gareth Rogers, Highways Engineer, direct line 01225 713384 or email gareth.rogers@wiltshire.gov.uk

AGENDA

Membership of the CATG

For membership please click on the link below:

<http://modern.gov.wiltshire.council/mgCommitteeDetails.aspx?ID=1316>

1 **Note Tracker** (*Pages 3 - 26*)

The following information is included in the attached Note Tracker:

- Attendees and Apologies
- Approval of notes of the previous meeting
- Financial Position
- Top 5 Priority Schemes
- Other Priority Schemes
- New Requests/Issues
- Current / ongoing schemes
- Other items

2 **Date of the next meeting**

DEVIZES COMMUNITY AREA TRANSPORT GROUP 28 JULY 2016 ACTION NOTES

	Item	Update	Actions and recommendations	Who
1.	Attendees and apologies			
	Apologies:	None		
2.	Notes of last meeting			
		The notes of the previous meeting were ratified at the Devizes Area Board on 23 January 2017 (click on link for webpage)		All
3.	Financial Position			
		The final finance sheet is appended £43 remaining £15,571 is 16/17 allocation Consensus is to ask for contributions to schemes		All
4.	Top 5 Priority Schemes			
a)	4425 - Market Lavington 20mph Speed Limit Assessment & Road Markings	Works order has been placed with contractor TRO due to become effective by end of June 2017 Issue to be removed from priority list.		

DEVIZES COMMUNITY AREA TRANSPORT GROUP 28 JULY 2016 ACTION NOTES

b)	Devizes, Avon Terrace / Rotherstone 20mph Assessment	Preparation of works order for contractor ongoing. Issuing to contractor expected July 17. Issue to be removed from priority list		
c)	4249 Devizes – Andover Road Signs advising of entrance to commercial recycling centre.	PW agreeing with Grist about signage – Grist are funding signage To be removed from priority list.		
e)	Roundway – Windsor Drive Bus stop hardstanding.	Work complete – remove from list.		
f)	Issue 4596 Potterne – concern regarding ability to cross the A360 at 2 locations	Area outside George and Dragon is not highway so no action possible by this group at this stage Ryleaze Steps – Work Completed, close issue and remove from list		
g)	4359 Little Cheverell – Low Road Request for 20mph restriction.	Parish Council have requested the introduction of a 20mph restriction through Low Road, and committed to contribution of £3,000. Happy to proceed as assessment indicates appropriate for this area with £2,500 contribution from PC. Sign locations to be considered.		
h)	4782 Install Dropped Kerb Mintys Top Bromham	CATG have outlined support and committed £1000 towards cost. The PC have outlined their willingness to contribute 25% to costs (£250) Works order has been placed with contractor – expected Jul / Aug. Keep on the list until works completed		
i)	Issue number 4939 Ethcilhampton	CATG discussed issue and approved to commit £300 towards implementation of Playground Warning signs, providing PC contribution of 25%. MW to confirm. Scheme has been included in 2016/17 work programme for		GR

DEVIZES COMMUNITY AREA TRANSPORT GROUP 28 JULY 2016 ACTION NOTES

		development ahead of placing order for installation in 2017/18		
		development ahead of placing order for installation in 2017/18		
5.	Other Priority schemes			
a)	Roundway – Brickley Lane Removal of Traffic Calming outside of Lodge Cottage.	Roundway Parish Council (RPC) have completed consultation and wish to proceed. Initial estimate of £10k, and contribution will be required To be considered when future funding becomes available Question to be put to DTC is they are willing to contribute 30%		
b)	Issue Number 4843 A360 Devizes to Potterne Footpath Extension	Alterations to the pedestrian crossing point in Roundway Parish but which is mainly used by Potterne residents to the Devizes CATG. We understand that negotiations have been underway and Potterne Parish Council are keen to see improvements as soon as possible in the interest of pedestrian safety. Site meeting has taken place, and Land Owner has confirmed willingness to dedicate the land to enable extension. Significant development work required and potential bid for Substantive Bid. Funding required to enable legal process for Land Transfer & Design Work, an initial element to develop a solution to enable accurate assessment of costs circa £4,000. To be considered when future funding becomes available. Devizes TC and Potterne PC to be asked for contribution towards the assessment costs.		
6.	Outstanding issues			

DEVIZES COMMUNITY AREA TRANSPORT GROUP 28 JULY 2016 ACTION NOTES

a)	<p>4730 Speeding Through Bishop Cannings Nr Primary School Request for Improvements to School Access</p>	<p><i>Children and parents at Bishops Cannings have to cross a road to access a parking area. The Parking area is situated at a crossroads on the turning to the school and is a dangerous place to cross with small children. A pedestrian crossing would make this area safer and encourage parents to park there instead of by the school. The speed limit is 50 until the road enters the village so signage might also advise cars to slow in this area</i></p> <p>The issue has been looked at previously as part of the Taking Action On School Journeys initiative. The provision of facilities which improve access to the Village Hall car park is restricted due to land ownership issues. Further measures should be channelled through future TAOSJ applications</p> <p>Metrocount has been requested – awaiting results of MC</p>		
b)	<p>4833 White Lines Across Driveway Mill Road Devizes</p>	<p><i>We have recently built a new bungalow in Mill Road which has a particularly wide driveway due to the visibility splays. We have found however that at times cars and other vehicles have been parked in front of our driveway even though we have a polite notice stating to keep it clear. We are not resident in the bungalow yet but would like to request that white lines are installed on the road across the full width of the driveway. Our neighbours' garages have drop curbs out onto Mill Road with white lines across to prevent others parking there and blocking their garages which proves effective. We would be grateful if you would consider our request.</i></p> <p>Sent to Town Council for consideration. Issue has been generated by private development. Obstruction of access is a matter for the Police. Was on TC agenda at last meeting. TC were supportive. Response to be CATG not supportive. Individual to be advised that H-bar acceptable if they seek permission from highways and privately fund it.</p>		
c)	<p>Issue No 4926 New Park Street / Wharf</p>	<p><i>Poor street lighting from New Park street into the Wharf Car Park suggestion from residents of Anstie Court that the street lighting should be improved.</i></p> <p>To be considered by CATG.</p>		

DEVIZES COMMUNITY AREA TRANSPORT GROUP 28 JULY 2016 ACTION NOTES

		<p>Town Council supportive of this. To be looked at as part of the wharf redevelopment. KF to raise at AQ group.</p> <p>To be put on hold as part of the Wharf Redevelopment project. To be removed.</p>		
d)	<p>Issue No 4936</p> <p>Town Centre Car Park Signing.</p>	<p><i>At a recent meeting of the Town Councils planning committee concern was raised about the effectiveness of some motorist signage which directs visitors to the town centre and town centre car parks.</i></p> <p>CATG discussed issue, and suggested that DTC need consider the issue further and develop a Car Parking Strategy for managing visitors / shoppers ahead of request for changes through the CATG</p> <p>Not discussed at TC yet,</p>		
e)	<p>Issue 5028</p> <p>Caen Hill Dual Carriageway</p>	<p><i>The issue is the number of accidents and incidents that take place on Caen Hill along the dual carriageway. I live in Poulshot and use the junctions across the dual carriageway daily as a motorist and less frequently as a pedestrian and cyclist. I will not allow my teenage children to cycle to Devizes because of the hazards of getting across the road. In the past two weeks there have been two accidents at the junction causing chaos and clearly endangering life. In my 16 years as a Poulshot resident my perception of the accident rate on this stretch of road is that it is disproportionately high as compared to other parts of the county. I always wonder as I wait at the junction if today will be my day to be involved in a collision. I am interested to know if the accident data for Caen Hill bears out my perception and what can be done to address this. There isnt absolutely no benefit in this stretch of road being a dual carriageway it increases risk.</i></p> <p>Has Town Council / Parish Council support been given?</p> <p>Major review taking place on Caen Hill over the next 6-9 months</p> <p>Not yet discussed at DTC</p>		

DEVIZES COMMUNITY AREA TRANSPORT GROUP 28 JULY 2016 ACTION NOTES

f)	<p>Issue 5067 B3098 School Crossing Erlestoke</p>	<p><i>School children in Erlestoke have been forced to walk across the main road passing through the village to get on and off the school bus in a high risk location outside the George and Dragon Pub. Numerous attempts have been made to improve safety but without success. In an effort to do something a non approved warning sign was erected on the approach to the village a 100m before the school crossing. The sign was highly visible and well received. It also helped prevent cars coming down the hill past the prison from ploughing into the embankment at the bend leading into the village and where the sign now removed was located. As a result of a complaint from the owners of the George and Dragon PH who used this to support their grievances with the local community over their failed planning application the Parish Council were advised to remove the sign. This has been done and after 20 years of community effort we are back to square one. Since the sign has been removed two cars have failed to make the corner and ploughed into the embankment. The sign consequently provided additional security. Although consideration has been given to changing the crossing point we have not been able to find a more suitable location. However the crossing continues to be a frightening and unsafe experience</i></p> <p><i>The Parish Council would like to see a properly approved highly visible warning sign installed in the location of the previous sign - now removed</i></p> <p>Has Town Council / Parish Council support been given?</p> <p>GR to investigate the site - chevrons/school crossing signs. Once a decision made -elevate this to a priority</p>		
g)	<p>Issue 5106 Great Cheverell – Speed Issue</p>	<p><i>Crossing the B3098 into Great Cheverell The existing 50mph on stretch of B3098 between Earlstoke prison and Little Cheverell at the crossroads at Pear Tree Lane makes it very dangerous to cross B3098 into Great Cheverell. No visibility what so ever when pulling out from Pear Tree Lane looking left towards Earlstoke looking right is poor. I was crossing this junction only to have a near miss with a van possibly speeding it doesnt matter its too fast the existing speed limit. The PC for Great Cheverell lives on that junction and faces this every day I use the road to get access to Pear Tree Hill daily. Is a mirror a possibility please.</i></p> <p><i>Speed limit lowered from 50mph to 40mph better warning signage mirror</i></p> <p>Has Town Council / Parish Council support been given?</p>		

DEVIZES COMMUNITY AREA TRANSPORT GROUP 28 JULY 2016 ACTION NOTES

		Maintenance of hedgerow and visibility splays suggested as a first action.		
h)	Issue 5147 Great Cheverell – Speed Issue	<p><i>Risk of serious accident due to speeding drivers at a blind bend in regular use by local residents and people enjoying recreational use of Salisbury Plain. Danger point is on the main route between the Lavingtons and Westbury a commuter and HGV diversion route so traffic volumes and speeds are high. Large HGVs turning tofrom the C40 are an additional hazard. Collision records show a concentration of accidents at this point both in the past when residents recall a fatality and less seriously more recently i.e. 12.4.99 15.4.99 2.2.00 13.9.01 and 24.3.05. See also Area Board Issue No. 5106. Improved signage to warn drivers of the blind access to protect local residents and recreational users and all drivers on the B3098. At present there is almost no signage.Possible use of rumble strips specifically east of Pear Tree Lane to slow traffic approaching this blind bend.Active enforcement of the current 50mph limit by Wiltshire Police.Reduction of the speed limit to 40 mph for an appropriate substantial length of the B3098 to include a section east of Pear Tree Lane and west by Victoria Park housing.</i></p> <p>Has Town Council / Parish Council support been given?</p> <p>As above</p>		
i)	Issue 5202 All Cannings 20mph	<p><i>All Cannings Parish Council would like to request a 20 MPH zone in the Village in the area to the west of the Lipgate including Greenhouse Road Townsend The Street and Chandlers Lane. NOT on the Lipgate.</i></p> <p>Has Town Council / Parish Council support been given?</p> <p>To proceed assuming confirmation from PC re contribution</p>		
j)	Issue 5244 A360 Blackdog Crossroads	<p><i>A360 - Black Dog Crossroads visibility splays.</i></p> <p><i>Work to improve the visibility splays</i></p> <p>Has Town Council / Parish Council support been given?</p> <p>Waiting to find out about land ownership of adjacent land.</p>		
k)	Issue 5280 Urchfont – Speeding on B3098 Crooks Lane	<p><i>There is an accident waiting to happen due to a dangerous and urgentsituation especially for children on the B3098 road going towards the A342. The 30 mile an hour derestriction sign finishes far too early and needs moving way past Crooks Lane before there is a serious tragic accident. At the</i></p>		

DEVIZES COMMUNITY AREA TRANSPORT GROUP 28 JULY 2016 ACTION NOTES

		<p><i>moment drivers put their foot down once they have past the derestriction sign and come hurtling down the hill. Children cross that road from Urchfont on a morning to catch the bus for school and it is a serious health and safety issue bordering on Child Protection. It makes a mockery of the 20 mile an hour signs recently placed in Urchfont village and further up Crooks Lane to protect the children when there is no provision for vulnerable children in that part of Urchfont to cross this busy main road who are usually unaccompanied. It does not help that the Urchfont sign is in the wrong place and also needs moving as drivers think they have left the village which they have not as in fact the village stretches to all the houses on Crooks Lane and beyond. Simply move the derestriction sign and the Urchfont sign further along the road</i></p> <p>Has Town Council / Parish Council support been given?</p>		
l)	<p>Issue 5283 Chandlers Lane, Bishops Cannings</p>	<p><i>Chandlers Lane Bishops Cannings. There has always been an issue of speeding traffic going from the national speed limit into the 30mph zone and in the opposite direction where the vehicles in the 30 zone can see clearly down the lane that there is a national speed limit approaching. Consequently this has produced speeding traffic both ways within the 30 zone. Traffic calming measures are needed now more than any time as the new development at Lay Woods is going to provide a rat run to get off and onto the A361. Therefore exponentially increasing the volume of traffic and significantly the volume of speeding traffic. There is a play area open ground. Right next to the road at Oak Close with a large number of children playing whilst there are railings between them and the road I often see them running out after footballs for example. The traffic needs to be slowed. Thank you. Look to reduce the speed offer traffic calming measures and make sure Bishops Cannings Chandlers Lane does not become a rat run for the new Lay Woods development.</i></p> <p>Has Town Council / Parish Council support been given? If so then suggest metro count with a view to setting up CSW group.</p>		
m)	<p>Issue 5331 B3098 Crooks Lane, Urchfont</p>	<p><i>The B3098 has a 60mph speed limit where it meets the bottom of Crooks Lane. Members of the public in particular school children from the age of 11 have to cross the B3098 to get to the bus stop. Cars come over the brow of the hill towards Urchfont on the B3098 at high speed and do not react to the signs for the village nor the request to slow down up by Walnut Close until they are well past Crooks Lane.</i></p>		

DEVIZES COMMUNITY AREA TRANSPORT GROUP 28 JULY 2016 ACTION NOTES

		<p><i>The speed limit here needs to be reduced from 60 mph to 30mph</i></p> <p><i>Extend the 30 mile an hour speed limit on the High Street B3098 in Urchfont to cover the junction with Crooks Lane and to reduce the 60 mile an hour limit on the bottom of Crooks Lane itself to 30 or 20 mph.</i></p> <p>Has Town Council / Parish Council support been given?</p> <p>GR to arrange measurement of speed in this area.</p>		
n)	Issue 5360 A342 Dunkirk Hill	<p><i>Speed limit A342 Dunkirk Hill Devizes SN10 2BQ The current speed limit for this urban road is 40mph which appears to be potentially incorrect for the type of housing and street lighting in an urban area. My understanding is that to permit the introduction of a 30 mph requires there to be substantive frontage development with direct access. This development needs to equate to a minimum of three properties per 100 metres. Dunkirk Hill meets and substantially exceeds this min criteria for a 30 MPH and in addition to which has sufficient street lighting that also meets the definition.</i></p> <p>Has Town Council / Parish Council support been given?</p>		
o)	Issue 5409 C50 Spaniels Bridge, Coate	<p><i>Parking of vehicles on the C50 at Spaniels Bridge Coate. This problem is the result of the recent sale by Aster of land long used as a car park by the residents of Spaniels Bridge. Displaced vehicles now have no alternative but to park on-road. Despite parish council representations Wiltshire Council have given permission for change of use for the land to domestic curtilage. Roadside parking at this point is extremely hazardous and is impacting on the visibility for vehicles using the C50 and for neighbouring properties emerging from off-road parking.</i></p> <p>Has Town Council / Parish Council support been given?</p> <p>Parking problems caused by car park being sold off by housing association. PW to raise it with PC.</p>		
6.	Other items			
a)	Windsor Drive waiting restrictions	<p>Complete</p> <p>COmplaint received that cars parked moved to jubilee road. view is</p>		GR

DEVIZES COMMUNITY AREA TRANSPORT GROUP 28 JULY 2016 ACTION NOTES

		that this is good because it is less dangerous for the cars to be there than on windsor drive.		
b)	Dropped Kerb request	<p><i>Firstly the post box on Thomas Wyatt Road at the top end of the old hospital development is at the back of a pavement with no dropped kerbs so I could not post two important letters and had to rely on my daughter to post them for me.</i></p> <p><i>Secondly I had an appointment at Hatts the physios on the corner of Couch Lane and Commercial Road. Despite the fact that this pavement had been relaid recently there is no dropped kerb and therefore no wheelchair access</i></p> <p>GR to check this ownership of the road and if it has been adopted. View sought from DTC</p>		
8.	Date of Next Meeting: 6 September 2017 Devizes Fire Station			

Devizes Community Area Transport Group

Principal Engineer – Gareth Rogers

1. Environmental & Community Implications

1.1. Environmental and community implications were considered by the CATG during their deliberations. The funding of projects will contribute to the continuance and/or improvement of environmental, social and community wellbeing in the community area, the extent and specifics of which will be dependent upon the individual project.

2. Financial Implications

2.1. All decisions must fall within the Highways funding allocated to Amesbury Area Board.

2.2. If funding is allocated in line with CATG recommendations outlined in this report, and all relevant 3rd party contributions are confirmed, Amesbury Area Board will have a remaining Highways funding balance of £TBC.

3. Legal Implications

DEVIZES COMMUNITY AREA TRANSPORT GROUP 28 JULY 2016 ACTION NOTES

3.1. There are no specific legal implications related to this report.

4. HR Implications

4.1. There are no specific HR implications related to this report.

5. Equality and Inclusion Implications

5.1 The schemes recommended to the Area Board will improve road safety for all users of the highway.

6. Safeguarding implications

6.1 There are no specific safeguarding implications related to this report.

Principal Engineer – Gareth Rogers

1. Environmental & Community Implications

1.1. Environmental and community implications were considered by the CATG during their deliberations. The funding of projects will contribute to the continuance and/or improvement of environmental, social and community wellbeing in the community area, the extent and specifics of which will be dependent upon the individual project.

2. Financial Implications

2.1. All decisions must fall within the Highways funding allocated to Devizes Area Board.

2.2. If funding is allocated in line with CATG recommendations outlined in this report, and all relevant 3rd party contributions are confirmed, Devizes Area Board will have a remaining Highways funding balance of **£43.00**.

3. Legal Implications

3.1. There are no specific legal implications related to this report.

4. HR Implications

4.1. There are no specific HR implications related to this report.

5. Equality and Inclusion Implications

5.1 The schemes recommended to the Area Board will improve road safety for all users of the highway.

6. Safeguarding implications

6.1 There are no specific safeguarding implications related to this report.

This page is intentionally left blank

**HIGHWAYS & TRANSPORT
TRAFFIC & NETWORK MANAGEMENT**

DEVIZES

Little Cheverell

**20mph Speed
Restriction Assessment**

Document Control Sheet

Project Title: **Devizes: Little Cheverell**

Report Title: **20mph Speed Restriction Assessment**

Revision: **Version 1**

Status: **Final**

Date: **April 2017**

Record of issue

Issue	Status	Author	Date	Check	Date	Authorised	Date
1	Final	GTR	04/2017	DMT	04/2017	DMT	04/2017

Document Control Sheet.....	2
1.0 Introduction and background.....	4
2.0 Data Collection.....	5
3.0 Collision Data	6
4.0 Analysis against Wiltshire Council Policy	7
5.0 Recommendation	8
6.0 Appendix 1	9

1.0 Introduction and background

Following the publication of Wiltshire Councils policy for 20mph speed limits, each of the 18 Community Area Transport Groups have the opportunity to identify and request assessments for 20mph speed limits.

The Parish of Little Cheverell in the Devizes Community Area requested the introduction of a 20mph limit during 2016/17. This request was considered by the Devizes CATG and supported by the Area Board.

This report sets out the analysis of this location against “Wiltshire’s Policy on 20mph Speed Limits and Zones” and the Department for Transport (DfT) Circular 01/2013 “Setting Local Speed Limits”. This guidance will be used to determine what area is suitable for a 20mph speed restriction.

Little Cheverell is located to the southwest of Devizes and a village of approximately 30 to 40 properties developed linearly along the B3098 and Low Road. Low Road is an unclassified road and links the B3098 and C40. The road is predominantly single track and is subject to a 7.5T weight restriction and 30mph restriction.

The full extents of the area studied are set out in Appendix 1.

2.0 Data Collection

Average speed and volume of traffic was recorded using a device called a Metrocount. This is a roadside unit with sensors placed across the road and identifies speed and volume of vehicles.

Metrocounts were installed at a variety of locations throughout Little Cheverell and were put in place from 23rd January – 6th February 2017.

The location of each counter is identified in Appendix 1.

Table 1 below sets out a summary of the results of each metrocount:

Metro Count Number	Total Traffic Volume (annual average daily traffic)	85th %ile Speed (mph)	Mean Average Speed (mph)
Site 1	60	24.6	18.2
Site 2	60	22.6	17.6
Site 3	59	21.0	16.6

Table 1 – Summary of metrocount results

3.0 Collision Data

An investigation into the Police Collision Database shows there has been no recorded Personal Injury Collisions in the 6 year period prior to this report (up to 31/12/16).

4.0 Analysis against Wiltshire Council Policy

It is important to remember that all speed limits should be set where it can be expected that overall compliance with the limit can be realistically achieved. Higher recorded speeds are generally not reduced with signing alone and are likely to require hard engineering measures such as alteration to the road layout and/or road humps.

With the above in mind, there are two different types of 20mph speed restriction – a 20mph Zone or a 20mph Speed Limit.

Wiltshire Council policy has considered previous studies into 20mph speed limits and zones as well as the guidance from DfT Circular 01/2013. Wiltshire Council policy identifies the options to consider when implementing 20mph zones and limits within Wiltshire:

20mph Zones:

20mph zones are defined as areas subject to a 20mph speed restriction which cover a number of roads and are supported by the appropriate traffic order and signs.

Typically there will be traffic calming measures at regular intervals throughout the zone to ensure speeds remain consistent in the area. This could include the addition of road humps and raised junctions as well as build outs, chicanes or pinch points.

20mph zones to be considered where:

- Roads are restricted to a 30mph speed limit
- A proven history of road user conflict with vulnerable users such as child pedestrians is apparent.
- New residential developments
- Where there is an alternative route existing, so drivers are able to avoid the zone.
- On major streets if there is a significant number of journeys on foot or bicycle and this outweighs the disadvantage of longer journeys for motorists.

20mph Speed Limits:

20mph limits are defined as streets where the speed restriction has been reduced to 20mph but where there are no physical calming measures. Drivers are alerted to the restriction by the use of terminal and repeater signs only.

20mph Speed Limits to be considered where:

- Mean before speeds are at or below 24mph (if they are just above this threshold lighter touch engineering measures to reduce speed may be implemented)
- On roads which do not have a strategic function or where motor vehicle movement is not the primary function.
- On major streets if there is a significant number of journeys on foot or bicycle and this outweighs the disadvantage of longer journeys for motorists.
- In rural areas where the location in addition to the above conditions meets the definition of a village as set out in Traffic Advisory Leaflet "01/04 – Village Speed Limits".

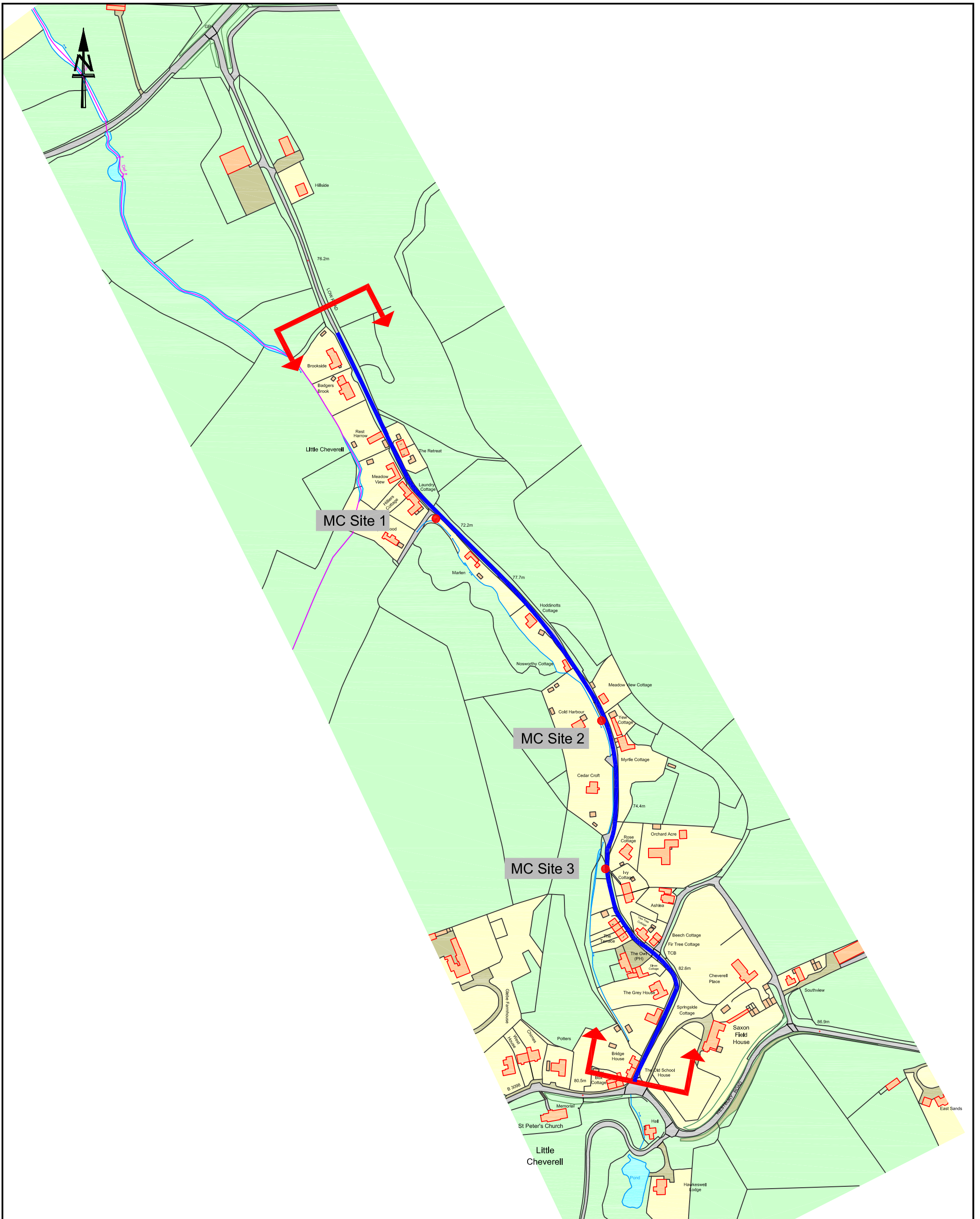
5.0 Recommendation

Results have shown that mean average traffic speeds within Little Cheverell are well within the guidance threshold of 24mph.



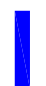
Based on the analysis of the speed and collision data for the area and comparing these results with Wiltshire Council Policy on implementing 20mph speed limits and zones, it is recommended that the location be considered for a 20mph speed limit.

It is estimated the costs to implement this scheme would be in the region of £4000. It should be noted this is the expected cost required from the Community Area Transport Group which includes the development, legal costs and implementation.

6.0 Appendix 1



NOTES:

-  Extent of investigation
-  Metro Count survey location
-  Existing 30mph restriction

Wiltshire Council
Where everybody matters
Traffic & Network Management
County Hall, Bythesea Road, Trowbridge
Wiltshire, BA14 8JD
Tel: 0300 4560100
Website: www.wiltshire.gov.uk

This map is reproduced from Ordnance Survey material with the permission of Ordnance Survey on behalf of the Controller of Her Majesty's Stationery Office © Crown copyright.
Unauthorised reproduction infringes Crown Copyright and may lead to prosecution or Civil Proceedings.
Wiltshire Council (100049050) 2017

F					
E					
D					
C					
B					
A					
O	24/04/17	GTR	DMT	DMT	ORIGINAL
REV	DATE	DRAWN	CHECK	APPRV	DESCRIPTION
DRAWING PURPOSE:					
ISSUE					

PROJECT:			
20MPH SPEED LIMIT ASSESSMENT LOW ROAD			
DRAWING TITLE:			
APPENDIX 1			
SCALES:	NOT TO SCALE	SHEET SIZE:	A3
DRAWING No.	2016-189 LCHE GTR D002	REVISION:	
FILE REF:	LT/ENGI/AB/DEVI/2016-189		

Devizes CATGFINANCIAL SUMMARY**BUDGET 2017-18**

	£15,751.00	CATG ALLOCATION 2017-18
	£14,120.90	2016-17 Carry forward
Contributions		
Devizes Town Council	£1,000.00	Avon Terrace 20mph
Roundway PC	£1,000.00	Windsor Drive Crossing (from last year)
Bromham PC	£250.00	Mintys Top DK
Etchilhampton PC		Sign (Subject to Confirmation) £75 17/18
Total Budget 2017-18	£32,121.90	
Commitments from 2016-17		
Little Cheverell Low Road 20mph implementation xxxx xxxx	£2,500.00	Actual
Commitments from 2016-17		
A342 Andover Road - Signs (Grist Group)	£0.00	Costs to be recovered by 3rd Party
Market Lavington 20mph Speed Limit	£4,558.76	Order Value
Avon Terrace Speed Limit	£4,000.00	Estimate
Etchilhampton - Playground Warning Signs	£300.00	Estimate (Subject to Confirmation)
Bromham Mintys Top - Dropped Kerb	£804.70	Order Value
New Schemes / Schemes On hold / In Development		
Roundway - Brickley Lane Traffic Calming removal	£0.00	
All Cannings - Village Gates	£0.00	
A360 Potterne to Devizes Footway	£4,000.00	
Town Centre Car Park Signing	£0.00	
Expenditure	£16,163.46	
Remaining	£15,958.44	

This page is intentionally left blank

Report to	Devizes Area Board
Date of Meeting	17/07/2017
Title of Report	Community Area Grant funding

Purpose of the report:

To consider the applications for funding listed below

Applicant	Amount requested
Applicant: The Lions Club of Devizes Project Title: Central Devizes Public Access Defibrillator. View full application	£1000.00
Applicant: Wharf Theatre Project Title: Wharf Theatre Regeneration Project View full application	£5000.00

1. Background

Area Boards have authority to approve Area Grants under powers delegated to them. Under the Scheme of Delegation Area Boards must adhere to the [Area Board Grants Guidance](#)

[The funding criteria and application forms](#) are available on the council's website.

2. Main Considerations

2.1. Councillors will need to be satisfied that funding awarded in the 2015/2016 year is made to projects that can realistically proceed within a year of it being awarded.

2.2. Councillors must ensure that the distribution of funding is in accordance with the Scheme of Delegation to Area Boards.

2.3. Councillors will need to be satisfied that the applications meet the Community Area Board grants criteria.

3. Environmental & Community Implications

Grant Funding will contribute to the continuance and/or improvement of cultural, social and community activity and wellbeing in the community area, the extent of which will be dependent upon the individual project.

4. Financial Implications

Financial provision had been made to cover this expenditure.

5. Legal Implications

There are no specific legal implications related to this report.

6. Human Resources Implications

There are no specific human resources implications related to this report.

7. Equality and Inclusion Implications

Community Area Boards must fully consider the equality impacts of their decisions in order to meet the Council's Public Sector Equality Duty.

Community Area Grants will give local community and voluntary groups, Town and Parish Council's equal opportunity to receive funding towards community based projects and schemes, where they meet the funding criteria.

8. Safeguarding Implications

The Area Board has ensured that the necessary policies and procedures are in place to safeguard children, young people and vulnerable adults.

9. Applications for consideration

Application ID	Applicant	Project Proposal	Requested
2468	The Lions Club of Devizes	Central Devizes Public Access Defibrillator.	£1000.00
Project Description: We seek funding to provide a Public Access Defibrillator in Central Devizes			
Proposal That the Area Board determines the application.			

Application ID	Applicant	Project Proposal	Requested
2441	Wharf Theatre	Wharf Theatre Regeneration Project	£5000.00
Project Description: The Wharf Theatre is in desperate need of renovation and upgrading of its aging facilities. This regeneration project will ensure the longevity of its future and increase the use of the venue as an arts hub for the Devizes Community Area.			
Proposal That the Area Board determines the application.			

No unpublished documents have been relied upon in the preparation of this report

Report Author:

Graeme Morrison
Community Engagement Manager
07986365943
graeme.morrison@wiltshire.gov.uk

Report to Devizes Area Board
Date of meeting 16 May 2016
Title of report Community Area Grant funding

Purpose of the Report:

To consider a councillor-led initiative requesting funding from the Area Board.

Applicant	Amount requested
Cllr Richard Gamble	£6,000.00

1. Background

Area Boards have authority to approve Area Grants under powers delegated to them. Under the Scheme of Delegation Area Boards must adhere to the [Area Board Grants Guidance](#)

2. Main Considerations

- 2.1. Councillors will need to be satisfied that funding awarded in the 2016/2017 year is made to projects that can realistically proceed within a year of it being awarded.
- 2.2. Councillors must ensure that the distribution of funding is in accordance with the Scheme of Delegation to Area Boards.
- 2.3. Councillors will need to be satisfied that the applications meet the Community Area Board grants criteria and practice papers for [councillor-led initiatives](#)
- 2.4. [Best practice advises that applications relating to young people or highways and transport should be considered by, and seek a recommendation from, the Local Youth Network or Community Area Transport Group.](#)

3. Environmental & Community Implications

Councillor led-projects are designed to enable councillors to tackle issues in their area, including projects and initiatives which have been initiated by the community eg. a community issue. Councillor-led projects should not be used to fill gaps where there are service shortfalls or where it is possible for the matter to be resolved through the use of the Community Area Grants scheme.

4. Financial Implications

Financial provision had been made to cover this expenditure. [The Community Area Grants scheme which funds Councillor-led initiatives can only provide capital funding.](#)

5. Legal Implications

There are no specific legal implications related to this report.

6. Human Resources Implications

There are no specific human resources implications related to this report.

7. Equality and Inclusion Implications

Community Area Boards must fully consider the equality impacts of their decisions in order to meet the Council's Public Sector Equality Duty.

8. Safeguarding Implications

The Area Board has ensured that the necessary policies and procedures are in place to safeguard children, young people and vulnerable adults.

9. Applications for consideration

Application Name	Provider	Project Proposal	Requested
Cllr Richard Gamble	DOCA	DOCA project works	£6,000.00
Project description DOCA produces and delivers a range of events throughout the year these include: Picnic in the Park * The International Street Arts Festival * The Confetti Battle * Devizes Carnival * The Christmas Lantern Parade & workshops * The Winter Ales Festival DOCA work with local schools, residential care homes, community groups, museums, large numbers of local volunteers, local businesses, The Town Council, local, regional, national & international artists and have huge audiences of all ages. Over the year DOCA attract approximately 34,000 people to their events, and 1380 people participate in workshops for events such as Carnival and the Lantern Parade. DOCA generate nearly half of their income from advertising, stall holder concessions. This year DOCA's original Arts Council funding application was rejected and they have had to reapply with a request for a lower amount. DOCA have now received confirmation that this funding application for a lower amount has been successful. If this application to the area board is successful, this will constitute part of the match funding required for this Arts Council Funding DOCA will use all their income to deliver events such as Confetti Battle, Carnival and Winter Parade and will re-apply to ACE for support to continue our work in 2018. An itemised list of this items that will be purchased with this money is on the next page:			

Item	cost
Container as long term storage solution – including delivery and installation	£1640
Parking cones – to reduce long term hire costs	£396
Paint for Colour Dash – 5k fundraising run before Confetti Battle	£538
Guillotine A3 – speeding up office work	£39
Withies, glue & tissue for lantern making workshops	1750
Basic catering equipment – (we currently ask volunteers to lend equipment)	£50
Production box & festival essentials – gloves – gaffa tape, cable ties etc.	£75
New signage – money towards new lamp post signs	1512
Total	6000

Proposal
That the Area Board determines the application from Cllr Richard Gamble for £6,000

Background documents used in the publication of this report:
Quotes/estimates for this proposal can be obtained from the Community Engagement Manager upon request.

Report Author Name, Graeme Morrison
Tel: 07986 365943 Email: graeme.morrison@wiltshire.gov.uk

